

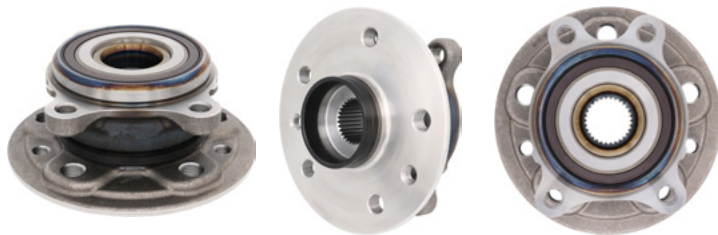


NEW NUMBER ANNOUNCEMENT – MAY 2026

| New BCA Part | Part Type | Applications | Position | VIO |
|-------------------------|--------------------------------|---|------------|---------|
| WE62044 | Wheel Bearing Assembly | Lexus 2022-25 LX600 | Rear Left | 17,184 |
| WE62045 | Wheel Bearing Assembly | Lexus 2022-25 LX600 | Rear Right | 17,184 |
| WE62046 | Wheel Bearing and Hub Assembly | Toyota 2023-25 Prius; 2023-24 Prius Prime | Rear | 108,167 |
| WE62047 | Wheel Bearing and Hub Assembly | Lexus 2022-25 NX250 | Rear | 44,101 |
| WE62049 | Wheel Bearing and Hub Assembly | Lexus 2021-25 IS300; 2021-25 IS350; 2022-25 IS500; 2023-25 RC300; 2023-25 RC350 | Rear | 96,430 |
| WE62050 | Wheel Bearing and Hub Assembly | Lexus 2024-25 LC500; LC500h; LS500; LS500h | Rear | 5,146 |
| WE62051 | Wheel Bearing and Hub Assembly | Lexus 2024-25 RZ300e; 2023-25 RZ450e; Toyota 2023-25 bZ4X | Front | 54,501 |
| WE62052 | Wheel Bearing and Hub Assembly | Lexus 2022-25 NX250; NX350; NX350h; NX450h+ | Front | 227,533 |
| WE62053 | Wheel Bearing and Hub Assembly | Lexus 2024-25 LC500; LC500h | Front | 2,710 |
| WE62066 | Wheel Bearing and Hub Assembly | Toyota 2017-18 Yaris iA; 2019-20 Yaris; Scion 2016 iA | Front | 97,602 |
| WE62068 | Wheel Bearing and Hub Assembly | Mazda 2016-23 CX-9 | Front | 195,731 |

Click Part Numbers Above to See Part & Application Details on BCABearings.com

FEATURED APPLICATION



WE62052 - WHEEL HUB ASSEMBLY
227,533 VEHICLES IN OPERATION



2022 - 2025 LEXUS NX

Reference BCA Catalog Data for Complete List of Applications



NEW NUMBER ANNOUNCEMENT – MAY 2026

FEATURED APPLICATION



WE62068 - WHEEL HUB ASSEMBLY
195,731 VEHICLES IN OPERATION

FEATURED APPLICATION



WE62046 - WHEEL HUB ASSEMBLY
108,167 VEHICLES IN OPERATION

2023 - 2025 TOYOTA PRIUS

BCA Product Questions

NTN Bearing Corporation of America
Email: custservice@bcabearings.com
Phone: 800.323.2358

